

**EPL 21880**

# **Monitoring Report**

Reporting Period June 2024

Singleton Bypass Project

Document Number - SBPW2RC-ACOC-  
STBP-EV-RPT-000039

## Version control

Revision	Date	Description	Author	Reviewer
00	1/07/2024	Reporting period June 2024	A. Broger	S. Kunde

### Distribution of controlled copies

This document is available to all personnel and sub-contractors via the Project document control management system. An electronic copy can be found on the Project website.

The document is uncontrolled when printed. One controlled hard copy of the CEMP and supporting documentation will be maintained by the Quality Manager at the Project office (and on the project website).

# Contents

<b>1</b>	<b>Introduction .....</b>	<b>4</b>
1.1	Context .....	4
1.2	Background and project description .....	4
<b>2</b>	<b>Environmental Protection Licence and Reporting Requirements .....</b>	<b>6</b>
2.1	EPL Details .....	6
<b>3</b>	<b>Environmental Monitoring Data .....</b>	<b>6</b>
3.1	Reporting Period .....	6
3.2	Water and/ or Land Monitoring Requirements .....	6
3.2.1	Point 1 .....	6
3.2.2	Point 2 .....	7
3.2.3	Point 3 .....	7
3.3	Noise and vibration monitoring .....	7
3.3.1	Noise monitoring results .....	7

## Figures

1.	Project Overview .....	5
----	------------------------	---

## Tables

No table of figures entries found.

# 1 Introduction

## 1.1 Context

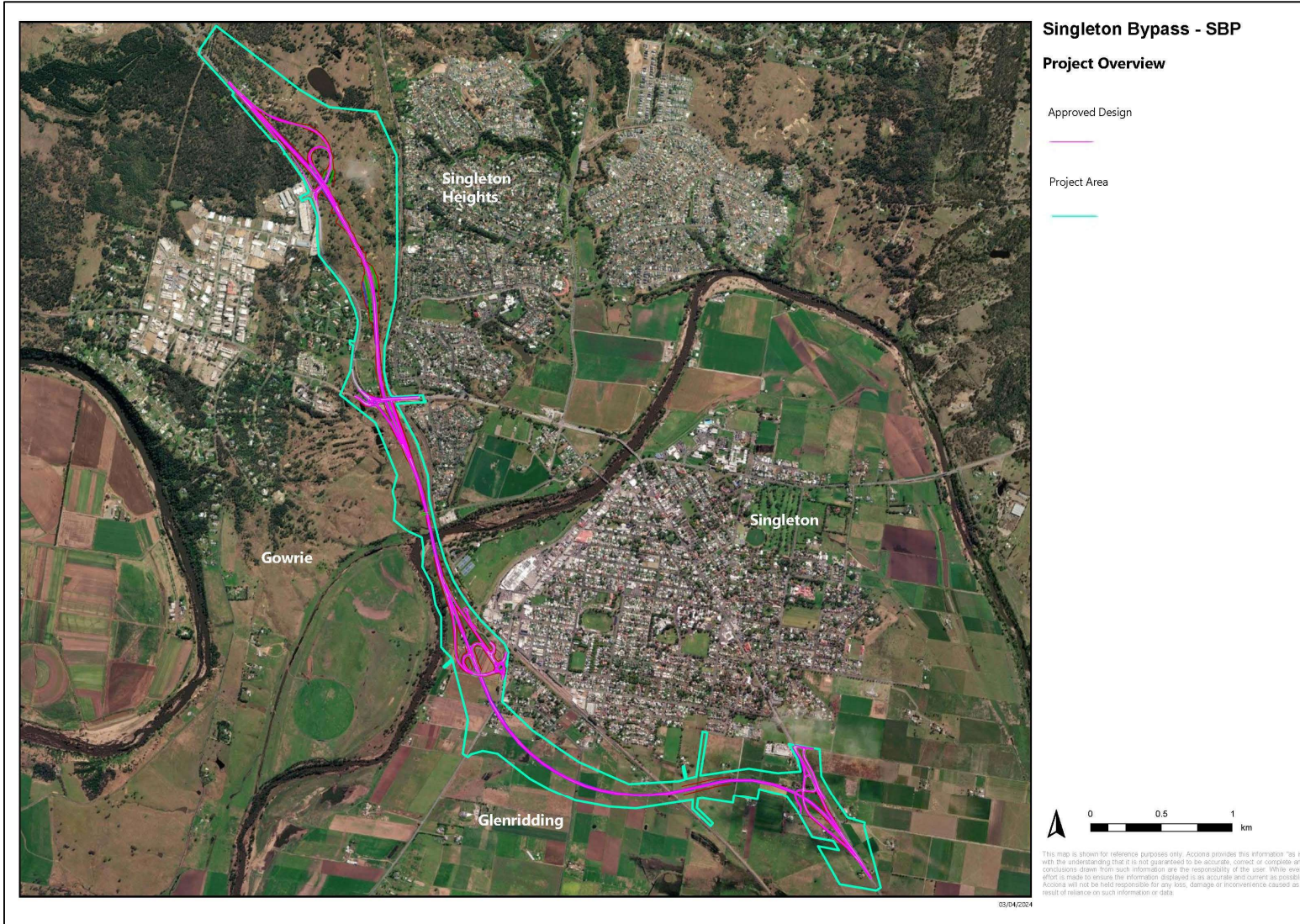
This Monitoring Report is prepared in response to conditions issued as part of the Environmental Protection Licence (EPL) EPL 21791 for the Singleton Bypass Project (the Project).

## 1.2 Background and project description

The New England Highway bypass of Singleton is located to the west of Singleton and connects the New England Highway to the north and south of Singleton. The bypass at Singleton will improve traffic flow, travel times and safety through Singleton by reduced traffic volumes and improve the movement of heavy freight vehicles. Construction will be staged and will take about 3 years to complete. Key features of the project include:

- About eight kilometres of new highway (the bypass) with a single lane in each direction
- Connection with the New England Highway at the southern end of the bypass (the southern connection) including a southbound entry ramp and northbound exit ramp.
- An approximately 600-metre-long bridge carrying the bypass over the northbound exit ramp at the southern connection.
- An approximately 1.7-kilometre-long bridge over the Main North railway line, the Doughboy Hollow and Hunter River floodplain, Army Camp Road and Putty Road (bridge over the floodplain).
- Construction of a full interchange at the Putty Road connection via a roundabout
- An approximately 100-metre-long bridge over the Rose Point floodway and Putty Road connection.
- An approximately 200-metre-long bridge over the Hunter River.
- An approximately 30-metre-long bridge over the New England Highway west of the existing Main North railway line overbridge (known as Gowrie Gates).
- Connection with the New England Highway at Gowrie Gates consisting of a southbound entry ramp and northbound exit ramp. The northbound exit ramp would connect to the New England Highway via a new roundabout intersection at Maison Dieu Road.
- A 1.7-kilometre northbound climbing lane between Gowrie Gates and the northern connection.
- Connection at Magpie Street including providing access to the nearby industrial area (the northern connection), consisting of a southbound entry ramp, southbound exit ramp and northbound entry ramp.
- An approximately 35-metre-long bridge over the bypass at the northern connection.
- Relocation of Singleton council water pump station and standpipe closer to Putty Road

An overview of the project features is provided in **Figure 1-1**.



## 1. Project Overview

## 2 Environmental Protection Licence and Reporting Requirements

### 2.1 EPL Details

EPL No. 21880 was issued by the NSW Environmental Protection Authority (EPA) to Acciona Construction Australia for the Singleton Bypass Project, New England Highway, Singleton NSW 2330. The licence is for construction works relating to Road Construction as defined under Schedule 1 of the Protection of the Environment Operations Act, 1997 (POEO Act). This licence issued by the EPA took effect from 7 June 2024.

The following report details environmental monitoring undertaken during this reporting period conducted in accordance with the EPL. The licence describes environmental monitoring and reporting requirements as part of the Singleton Bypass Project, and specifically requires surface water discharge criteria from temporary sediment basins and where applicable, representative noise monitoring of out of standard hours construction works. Noise and/or vibration monitoring can also be requested to be undertaken by an EPA authorised officer and would be documented in this report if required. The EPL can be found online at the EPA Website at the link below:

<https://app.epa.nsw.gov.au/prpoeoapp/Detail.aspx?instid=21880&id=21880&option=licence&searchrange=licence&range=POEO%20licence&prp=no&status=Issued>

It is possible that incorrect data could be published in the monthly report in good faith. As soon as the licensee becomes aware that the published monitoring data is incorrect or misleading, a correction log to amend the inaccurate or misleading data will be published.

## 3 Environmental Monitoring Data

### 3.1 Reporting Period

The environmental monitoring data provided in this report covers the period 07/06/2024 to 30/06/2024.

### 3.2 Water and/ or Land Monitoring Requirements

Condition M2.2 of the licence outlines the requirements to undertake the monitoring of surface water discharges from monitoring points. Condition R4.4 of the licence requires the submission of a Surface Water Discharge Monitoring Report on a monthly basis.

#### 3.2.1 Water Discharge Register

No discharges of water were undertaken in the reporting period.

### **3.3 Noise and vibration monitoring**

Condition L4.8 of the licence outlines requirements for the monitoring noise where out of hours works are undertaken. Condition M4.4 of the licence also details that the licensee must undertake noise and vibration monitoring as directed by an authorised officer of the EPA.

#### **3.3.1 Noise monitoring results**

No noise monitoring was undertaken during this reporting period.