



Waubra Wind Farm Bushfire Mitigation Plan 2024 - 2025



PLAN WAUBRA WIND FARM BUSHFIRE MITIGATION

CONTROL

PREPARED BY	REVIEWED BY	APPROVED BY
Barrand, Paul	Cox, Gary	Ammad Hassan
10-11-2024	21-11-2024	03-12-2024
[SIGNATURE]	[SIGNATURE]	[SIGNATURE]

The signed original is kept by **ACCIONA**.

RECORD OF CHANGES

REV.	DATE	DESCRIPTION
R08.2	01/07/2018	2018/19 submission updates - nil
R09		New template, update of corporate address
R10	20/06/2019	Updated as follows for the 2019-2020 Plan; site map, weblinks, include reference to OEMP V2.0 – 2018
R11	24/04/2019	Minor administrative and wording amendments; Removal of community consultation paragraph, WWF contact information, AE Policy reference, Section 8.2 frequency of inspections, Section 12.1
R12	12/02/2020	Minor administrative and wording amendments; update of contract positions, Update of Act, Update of related documents and references
R13	03/02/2021	Minor administrative and wording amendments; update of contract positions update of Act, update of related documents and references, include reference to 66kV Inspection Instruction
R14	28/01/2022	Minor administrative and wording amendments; update of Acts and Regs, update of position contacts, update of business name, update to dispute resolution to the standardized, update to auditing section, addition of Appendix C
R15	01/06/2023	Minor administrative and wording amendments; update the person responsible for preparing the Plan, update email address to Compliance business area
R16	06/10/2023	Minor administrative and wording amendments; update emergency contact details, include training requirements for line workers, include priority defect ratings and timeframes to complete maintenance
R16.1	13/10/2023	Minor administrative and wording amendments; include priority defect ratings and timeframes to complete maintenance, template change and formatting
R17	31/05/2024	Administrative and wording amendments; template revision, rewrite of the BMP, inclusion of a Bushfire Mitigation Regulations Cross Reference Table, inclusion of a distribution list
R18	04/09/2024; 03/12/2024	Minor update to referenced documents and images. Minor amendments following ESV feedback on R18

PLAN

WAUBRA WIND FARM BUSHFIRE MITIGATION

CONTENTS

TITLE	PAGE
1. PURPOSE	4
2. SCOPE	4
3. DEFINITIONS	4
4. RESPONSIBILITIES	4
5. DISTRIBUTION LIST	6
6. CONTACT INFORMATION	6
7. SETTING	8
7.1. Facility Ownership and Operating Structure:	8
7.2. Facility Location and Detail:	8
8. POLICY STATEMENT	8
9. OBJECTIVE	8
10. SCOPE OF ELECTRICAL SYSTEMS	9
10.1. OVERHEAD POWER LINES	9
11. NON AEAG ELECTRICAL SYSTEMS	10
12. RISK MANAGEMENT	10
12.1. MITIGATION STRATEGIES	11
12.2. MANAGEMENT OF 'AT RISK' ELECTRICAL LINES	11
12.3. MANAGEMENT OF VEGETATION	12
12.4. MANAGEMENT DURING ELEVATED FIRE RISK CONDITIONS	13
12.5. UTILISATION OF TRAINED PERSONNEL	14
12.6. SITE EMERGENCY RESPONSE	15
13. INVESTIGATIONS	15
14. COMMUNICATION OF THE PLAN	16
15. MONITORING, AUDITING AND UPDATING OF THIS PLAN	16
16. EXEMPTIONS	16
17. APPENDIX A – LOCALITY AND FACILITY MAPS	17
18. APPENDIX B – BUSHFIRE MITIGATION REGULATION CROSS REFERENCE TABLE	20
19. RELATED DOCUMENTATION	22

PLAN

WAUBRA WIND FARM BUSHFIRE MITIGATION

1. PURPOSE

This document has been drafted to comply with the obligations set out in Regulation 6 of the Victorian Electricity Safety (Bushfire Mitigation) Regulations 2023.

2. SCOPE

The scope of this document is defined by the above referenced legislation and relevant electrical lines under the control of AEAG at the Waubra Wind Farm.

3. DEFINITIONS

TERM	DEFINITION
AEAG	Acciona Energy Australia Global Pty Ltd
ATM	Authority to Mobilise
BoM	Bureau of Meteorology
CECOER	AEAG's remote operating centre
CFA	Country Fire Authority
DEECA	Department of Energy, Environment and Climate Action
ERP	Emergency Response Plan
ESV	Energy Safe Victoria
FRV	Fire Rescue Victoria
HSE	Health Safety Environment
HV	High Voltage
LOTO	Lock Out Tag Out
Plan	This Bushfire Mitigation Plan
SCADA	Supervisory Control and Data Acquisition
Site	Waubra Wind Farm, 275 Harrisons Road Ercildoune, Vic, 3352
TFB	Total Fire Ban, as declared by the CFA
MAXIMO	AEAG's Computerised Maintenance Management System (CMMS)
WWF	Waubra Wind Farm

4. RESPONSIBILITIES

POSITION	RESPONSIBILITIES
GENERAL MANAGER, OPERATIONS	Responsible for compliance with this Plan
AW1500 FLEET MANAGER	Responsible for the delivery of actions identified within this Plan
WWF HEALTH AND SAFETY REPRESENTATIVE	As defined by relevant O&HS legislation
COMMUNITY & STAKEHOLDER ENGAGEMENT	The distribution of this Plan to relevant external stakeholders

PLAN WAUBRA WIND FARM BUSHFIRE MITIGATION

5. DISTRIBUTION LIST

ROLE	DISTRIBUTION METHOD (EMAIL, WEBSITE, INTERNAL ETC...)
GENERAL MANAGER, OPERATIONS	INTERNAL
AW1500 FLEET MANAGER	INTERNAL
WWF HEALTH AND SAFETY REPRESENTATIVE	INTERNAL
COMMUNITY & STAKEHOLDER ENGAGEMENT	INTERNAL
EXTERNAL WEBSITE UPDATE	WWW.ACCIONA.COM.AU/WAUBRA
CFA DISTRICT 02 COMMANDER (GOLDFIELDS)	ADMIN.D02@CFA.VIC.GOV.AU
CFA DISTRICT 15 COMMANDER (BALLARAT)	ADMIN.D15@CFA.VIC.GOV.AU
CFA DISTRICT 16 COMMANDER (PYRENEES)	ADMIN.D16@CFA.VIC.GOV.AU
ENERGY SAFE VICTORIA	ELECTRICALINFRASTRUCTURE@ENERGYSAFE.VIC.GOV.AU

6. CONTACT INFORMATION

Operator	Acciona Energy Australia Global Pty Ltd
ABN	54 600 910 647
Site address	275 Harrisons Road Ercildoune, Vic, 3352
Postal Address	Melbourne Central Tower Level 38, 360 Elizabeth St, MELBOURNE VIC 3000
Contact Number	03 9027 1000

Person responsible for Plan preparation	Gary Cox
Position	General Manager, Operations
Site address	275 Harrisons Road Ercildoune, Vic, 3352
Postal address	Melbourne Central Tower Level 38, 360 Elizabeth St, MELBOURNE VIC 3000
Telephone	03 9027 1000
Email	energy.compliance.au@acciona.com

PLAN
WAUBRA WIND FARM BUSHFIRE MITIGATION

Person responsible for carrying out the Plan	Ammad Hassan
Position	AW1500 Fleet Manager, Operations
Site address	275 Harrisons Road Ercildoune, Vic, 3352
Postal address	Melbourne Central Tower Level 38, 360 Elizabeth St, MELBOURNE VIC 3000
Telephone	03 9027 1000
Email	energy.compliance.au@acciona.com

Emergency contact numbers for all site emergencies	
Primary contact	
- Emergency phone number (24/7 operations center)	1300 182 042
- Emergency email	Not applicable
Secondary contact – Ammad Hassan, AW1500 Fleet Manager	0417 356 372
Tertiary contact - Gary Cox, General Manager Operations	0498 056 657

Copies of the Bush Fire Mitigation Plan	<p>Electronic copies of this Plan are available through:</p> <ol style="list-style-type: none"> 1. AEAG’s internal document management system 2. The corporate website: www.acciona.com.au/waubra <p>Hard copies of the Plan are accessible during business hours from site 830am – 330pm.</p>
--	---

All printed or computer copies of this document not hosted in ACCIONA systems are considered NON-CONTROLLED. (Except copies explicitly stamped as CONTROLLED COPY)

7. SETTING

7.1. FACILITY OWNERSHIP AND OPERATING STRUCTURE:

Acciona Energy Oceania Pty Ltd (ACN 102 345 719) is the owner of WWF operating entity Pyrenees Wind Energy Developments Pty Ltd (ACN 097 047 268) (**PWED**). PWED has concluded a contract with Acciona Energy Australia Global (**AEAG**) which requires AEAG to perform the operations and maintenance of WWF (inclusive of at risk line), including performing all statutory and compliance requirements for WWF. Accordingly, this plan is submitted by AEAG as the Specified Operator as it is the entity which operates the at risk Lines as defined by the Electricity Safety Act 1998.

7.2. FACILITY LOCATION AND DETAIL:

WWF is located on land approximately 5km east of the Victorian township of Addington and 30 kilometers northwest of Ballarat.

The farm consists of 128 wind turbines, with a nameplate capacity of 192 MW of clean energy and has been operational since 2009. It produces the energy equivalent to the demand from around 138,000 homes. The farm is constructed on cleared, undulating land, which is of mixed farming country.

The sites aerial photo details and other pertinent information is found in Appendix A.

Whilst constructed on cleared and undulating land, the site has been defined by local government as a Bushfire Prone Area that crosses several CFA District areas, namely:

- CFA District 02 – Goldfields District
- CFA District 15 – Ballarat District
- CFA District 16 – Pyrenees District

8. POLICY STATEMENT

The Company is committed to reducing the risk of ignition from 'at risk' electrical lines in compliance with the Electricity Safety Act and associated Electricity Safety (Bushfire Mitigation) Regulations 2023. This continues to be achieved by the application of various techniques including:

- a detailed asset inspection program
- proactive operation and maintenance activities
- monitoring of plant and surrounding environment
- the prompt reporting of fires
- the safe and quick response for fire extinguishment

9. OBJECTIVE

The objective of this Plan is to outline AEAG approach to risk management and detail appropriate preventative and mitigative controls that may reduce both the risk of ignition and spread of fire initiated by 'at risk' electrical lines.

PLAN

WAUBRA WIND FARM BUSHFIRE MITIGATION

This Plan identifies several procedures and instructions aimed at reducing ignition risk initiated by ‘at risk’ electrical lines. This includes details on asset inspection and management, fuel reduction, ignition source containment and fire control.

This Plan aims to comply with the Electrical Safety (Bushfire Mitigation) Regulations 2023, and as a result:

- reduce the risk to AEAG personnel, contractors, and the public.
- outline the maintenance program of asset inspection.
- outline how the site is operated and maintained to reduce the risk of ignition and or spread of fire.
- outline processes to manage an emergency response.
- outline how this Plan is monitored, audited and improvements are captured.
- WWF commits to and providing ESV with information and reports when reasonably requested.

10. SCOPE OF ELECTRICAL SYSTEMS

The scope of electrical systems on Site are, similar to, those assets and systems defined by the Electrical Safety Management Plan and listed within Maximo. These systems / assets were installed during construction and include:

- 128 wind turbines generators
- 12KV underground cable
- 5 collector substations
- 205 x 66kV and 2 x 12kV (see Section 10.1 for further detail)
- 1 collector switching station
- met mast(s)
- maintenance facility

A detailed list of the ‘at risk’ electrical lines is detailed within Maximo.

Scope	Name	Code	Source
WWF	Electrical Safety Management Plan	Pending	Internal
WWF	Maximo – asset register download	N/A	Internal

10.1. OVERHEAD POWER LINES

WWF operates approximately 19 km of overhead power lines. All the overhead power lines operate at 66kV either as single circuit or double circuit. All overhead power lines are mounted on chromated copper arsenate treated timber poles. The poles are approximately 14 m high for single circuit lines and 18 m high for double circuit lines. The conductors are mounted on insulators which are in turn mounted on galvanized steel cross- arms that are attached to the top of the poles. A fibre optic cable is mounted on a catenary approximately 4m below the conductors and an earth wire is mounted a further 0.6 m below this. The clearance to ground level underneath the earth wire is variable but generally 6 – 7.5 m.

The overhead power lines all use bare Iodine as a conductor consisting of 7 strands of 4.75mm all aluminium alloys. AEAG does not operate any pole mounted switchgear or transformers as a part of the Waubra Wind Farm.

PLAN WAUBRA WIND FARM BUSHFIRE MITIGATION

11. NON AEAG ELECTRICAL SYSTEMS

On the site there are overhead lines and a terminal substation owned and managed by AusNet Services. These assets are managed by AusNet Services under that entities relevant Bushfire Mitigation Plan, hence they are not operated nor managed by AEAG or detailed under this Plan. The AusNet plan identified and should be used for the escalation of issues relating to those assets.

Scope	Name	Code	Source
Other	AusNet Bushfire Mitigation Plan	BFM 10-01&2 (AusNet)	External

12. RISK MANAGEMENT

This Plan and associated Site Risk Register is reviewed for cause, yearly, or as triggered by a regulators request, whichever comes first and is completed in accordance with the HSE Risk Management Procedure.

The Site Risk Register is retained within the business's online platform called Risk Wizard.

The review generally considers ignition sources, mitigative and preventative controls as detailed below:

- Sources of fire ignition that could be caused by 'at risk' electrical lines, during normal operations, faults, and maintenance activities.
- Nature and extent of combustible material that could be ignited by such sources of ignition.
- Influence of environmental conditions that are likely to occur during elevated fire danger.
- Nature and extent of an emergency response from first responders.
- Consequences of an onsite fire, including personnel, plant, and third-party hazards.
- Recovery measures and processes.

The preventative strategies to reduce the risk of a fire starting from onsite by electric lines include:

- Mitigation strategies developed
- Management of the sites 'at risk' electrical lines
- Manage the vegetation fuel reduction program in proximity to the 'at risk' electrical lines
- Management during elevated fire risk conditions
- Utilisation of trained personnel to implement controls

The mitigative strategies to reduce the risk of a small fire becoming a larger fire include:

- Maintain and implement a site emergency response processes and plans
- Inform and assist first responders including fire control agencies in the management and investigation of fires on site
- Maintain basic fire fighting and response equipment on site
- Utilisation of trained personnel to implement controls

Scope	Name	Code	Source
All	HSE Risk Management Procedure	PAU01_GAE07022	Internal
WWF	Electrical Safety Management Plan	Pending	Internal

12.1. MITIGATION STRATEGIES

Mitigation strategies captured under this Plan and Site Risk Assessment, include equipment and safety in design features captured during construction or operation of the wind farm. These features include but are not limited to asset design features such as:

- fire indicator panels, including 24/7 SCADA monitoring
- electric safety devices such as, transformer and turbine protection relays and metal clad switch gear
- numerous fire hydrants, with numerous extinguishers positioned through the site
- static water tank for the use of first responders

12.2. MANAGEMENT OF 'AT RISK' ELECTRICAL LINES

Preventative measures taken under this Plan, include equipment and overhead line inspections, plant inspections, provision of additional temporary fire prevention and control measures. This includes the identification of items requiring preventative or corrective maintenance. Inspections of 'at risk' electrical lines and associated equipment are:

- conducted on a three yearly basis, ensuring that no more than 37 months elapses between inspections, prior to the preceding Fire Danger Period as declared by the Country Fire Authority
- notifications are triggered via Risk Wizard, where that notice triggers the engagement a suitably qualified inspector(s)
- inspected by a competent person(s) who has satisfactorily completed an approved Energy Safe Victoria training course
- inspected in accordance with appropriate electric line clearance practices, as outlined under the Electricity Safety Act and Regulations. If during the inspection items requiring urgent attention are identified, the inspector shall raise this as soon as reasonably practicable, with site management, to ensure appropriate timely risk mitigation
- supplemented by a detailed report of the inspection. The draft report should be reviewed by AEAG in consultation with the contractor prior to final lodgment.

The inspections inform the scope and prioritization of preventive or corrective maintenance as outlined in the Overhead Lines Maintenance Strategy and Electrical Line Clearance. The methodology used to inspect the at risk lines are detailed in the Overhead Lines Maintenance Strategy together with the Overhead Line Asset Inspection Instruction and the Overhead Line Thermographic Inspection Instruction. The nature of the inspection methodology used to complete the inspection as set out in the aforementioned instructions directs the method of prioritization of the required maintenance.

Inspections and subsequent reports completed by competent contractor will be reviewed by AEAG's Engineering function responsible for the site to ensure quality and completeness of the inspections.

In addition to the above, AEAG have a on full time on-site team who oversee the maintenance and operations of WWF. This team is made up of various trades persons including A-grade electricians and experienced HV operators. These individual traverse major portions of WWF on a almost daily basis and are require to look for and report hazards on site, including anything which appears to be defects or of concern with at risk lines. Although ad hoc, this provides and additional layer of regular monitoring of the condition on at risk lines.

PLAN

WAUBRA WIND FARM BUSHFIRE MITIGATION

Scope	Name	Code	Source
WWF	Electric Line Clearance Management Plan	PLNAU08104	Internal
WWF	Electrical Safety Management Plan	Pending	Internal
All	Overhead Lines Maintenance Strategy	Pending	Internal
All	Overhead Line Asset Inspection Instruction	Pending	Internal
All	Overhead Line Thermographic Inspection Instruction	Pending	Internal

12.3. MANAGEMENT OF VEGETATION

Preventative measures taken under this Plan, and in accordance with the documents specified in this section include vegetation inspections, fuel reduction, and the provision of additional temporary fire prevention and control measures. This includes the verification that adequate clearance space is maintained between vegetation and the 'at risk' electrical lines. Vegetation inspections and fuel reduction activities are:

- conducted on a three yearly basis, ensuring that no more than 37 months elapses between inspections, prior to the normal Fire Danger Period as declared by the Country Fire Authority
- triggered by notifications via Risk Wizard, where that notice triggers the engagement a suitably qualified inspector(s)
- inspected by a competent person(s) who has satisfactorily completed an approved Energy Safe Victoria training course
- facilitated, in some circumstances, by the coordination of AEAG and AusNet Services
- inspected in accordance with appropriate electric line clearance practices, as outlined under the Electricity Safety Act and Regulations. If during the inspection items requiring urgent attention are identified the inspector, shall raise this as soon as reasonably practicable, with site management, to ensure appropriate timely risk mitigation
- supplemented by a detailed report of the inspection. The draft report should be reviewed by AEAG in consultation with the contractor prior to final lodgment.

The inspections and report inform the scope and prioritization of preventive or corrective maintenance. Activities may include vegetation removal or reduction with the aim of reducing the risk of vegetation coming into contact with 'at risk' electrical lines that gives rise to an ignition event.

Scope	Name	Code	Source
WWF	Operational Environmental Management Plan	PLN01_GAE07016	Internal
WWF	6 monthly Environmental checklists	N/A	Internal
All	Overhead Lines Maintenance Strategy	Pending	Internal
All	Authority to Mobilise Form	F01_PAU01_GAE07023	Internal

12.4. MANAGEMENT DURING ELEVATED FIRE RISK CONDITIONS

AEAG takes a tiered approach to the management of fire risk which is generally informed by government authorities such as the Bureau of Meteorology, the Country Fire Authority, the City of Ballarat and in accordance with the documents specified in this section.

Prior to the Fire Danger Period being declared by the CFA AEAG undertakes the following summer readiness review activities with the intent of reducing risk as the summer period approaches:

- asset inspections of 'at risk' electrical lines, in accordance with this Plan.
- vegetation inspection of 'at risk' electrical lines, in accordance with this Plan.
- verification that:
 - vehicles and buildings are appropriately stocked with serviced extinguishers, first aid kits and communication devices
 - water tanks on site are adequately filled
 - grass and fuel levels are managed around onsite buildings
 - relevant Emergency Response Plan exercises have been scheduled
 - onsite personnel qualification and training is reviewed
 - liaison with local brigades (consider site familiarization, site use for exercise etc...)

When a **catastrophic fire danger rating and/or a Total Fire Ban**, is declared by the CFA, AEAG will with the intent of reducing fire risk:

- the site manager to consider risk and thus work locations
- vehicle operators to be confined to formed roadways
- hot works are not permitted (unless written authority is sought from CFA, FRV or DEECA)

When site personnel become aware of a **fire event in proximity to the site**, AEAG will review the prevailing conditions and advice from the CFA to consider the following:

- activating the Emergency Response Plan and Procedure
- relocating staff to the maintenance facility
- full site evacuation; and,
- the utilisation of AEAG's remote operating center to operate the site.

Scope	Name	Code / Source	Source
WWF	Electric Line Clearance Management Plan	PLNAU08104	Internal
All	Overhead Lines Maintenance Strategy	Pending	Internal
All	Emergency Response Plan	PLN03_PAU01_GAE07006	Internal
All	Emergency Response Procedure	PAU01_GAE07006	Internal
All	Hot Works Instruction	IO2_PAU07102	Internal

12.5. UTILISATION OF TRAINED PERSONNEL

AEAG utilises inducted and certified employees and/or contractors to undertake numerous tasks outlined in this Plan. All personnel engaged on site are expected to be appropriately inducted and qualified relevant to their scope of work.

AEAG has not sought any exemptions from required ESV approved training courses.

AEAG inductions are tiered and commensurate with a risk-based approach:

- Induction level 1 – Site Familiarization (e.g. general site requirements including ERP)
- Induction level 2 – Entry to Enclosures (e.g. golden rules, LOTO and permit requirements)
- Induction level 3 – Technical (e.g. high risk works, HV authorisations etc..)

The table below outlines the key obligations and associated training requirements pertinent to the actions outlined in this Plan.

Theme	Qualification / Certification
Asset inspections	UET 20621 - Certificate II in Asset Inspection
Vegetation inspections	UET20312 - Certificate II in ESI – Powerline Vegetation Control
Thermography inspection	Certified Infrared Thermography training
Drone operations	Remotely Piloted Aircraft Operator Accreditation or Remotely Piloted Aircraft Operator's Certificate
Fire awareness & response	GWO Certification (or suitable alternate)
First Aid	GWO Certification (or suitable alternate)
LV Rescue	GWO Certification (or suitable alternate)
Auditing	Relevant Audit Certification

Verification of qualifications and competence is managed in two ways and in accordance with the documents specified below:

- for AEAG employees a copy of their qualifications is retained by the business in a business wide platform and verified in relevant processes as required (e.g. audit, periodic review, major task)
- for contractors AEAG has developed a two-step process where the Contractor develops an information package for the completion of a pre-mobilisation checklist, this is subsequently verified and retained by site management. This process is defined as the Authority to Mobilise.

PLAN

WAUBRA WIND FARM BUSHFIRE MITIGATION

Scope	Name	Code	Source
All	Contractor HSEQ Requirements Management Procedure	PAU01_GAE07023	Internal
All	Operations and Maintenance HSE Plan	PLN04_PAU01_GAE07022	Internal
All	Authority to Mobilise Form	F01_PAU01_GAE07023	Internal

12.6. SITE EMERGENCY RESPONSE

The Emergency Response Plan (**ERP**) documents below detail the organisational arrangements, systems, strategies, and procedures relating to emergency response.

The requirements underpinning ERP are contained within the Emergency Management Procedure. The Emergency Management Procedure describes the roles, responsibilities, resources, and training required for emergency preparation and response to ensure that the business is prepared to manage an emergency event in a safe and controlled manner.

These documents have been developed for the site to:

- ensure a coordinated response to an emergency event regardless of the nature of the event or the source of emergency (e.g. fire etc.)
- effectively escalate and support the response to external agencies (e.g. Country Fire Authority)
- effectively assign responsibilities and any actions required

Scope	Name	Code	Source
All	Emergency Response Plan	PLN03_PAU01_GAE07006	Internal
All	Emergency Response Procedure	F03_GAE07019	Internal

13. INVESTIGATIONS

An investigation will be initiated in the event of a fire involving 'at risk' HV electrical lines and undertaken in accordance with the Event Reporting and Management Procedure. The investigation will use the companies established event investigation and reporting frameworks and process to identify the cause of the fire and the actions required to reduce further occurrences on a repeat incident. All fires originating from the 'at risk' electrical lines will be reported to Energy Safe Victoria and if the event exposes a person to serious risk to their Health and Safety, WorkSafe Victoria. AEAG provides assistance to fire control authorities, as required, including in the investigation of fire on site.

Scope	Name	Code	Source
All	Event Reporting and Management Procedure	PAU01_GAE07021	All

PLAN

WAUBRA WIND FARM BUSHFIRE MITIGATION

14. COMMUNICATION OF THE PLAN

AEAG issues this Plan to key stakeholders and agencies as detailed in the distribution table listed at the front of this document. AEAG also makes the Plan available on the corporate website and online Community Hub.

15. MONITORING, AUDITING AND UPDATING OF THIS PLAN

Monitoring of this Plan will involve the utilization of the following business tools:

- the performance monitoring measures as outlined in the Event Reporting and Management Procedure, performance will be tracked utilizing the business's online platform called Enablon to raise and track incidents, investigations and associated actions
- the performance monitoring measures outlined in the Compliance Management Procedure, with performance tracked utilitising the business's online platform Risk Wizard to track actions arising from implementation of this Plan
- the performance monitoring measures outline in the business's online computerized maintenance management system to prioritize and track 'at risk' electrical line maintenance.

Auditing of this Plan will be undertaken in the following approach:

- Internal audits will be conducted in accordance with the audit schedule and scope as determined by AEAG Audit and Risk Committee and in accordance with the Internal Audit Procedure

Revisions to this Plan will be considered at least annually with the update considerate of:

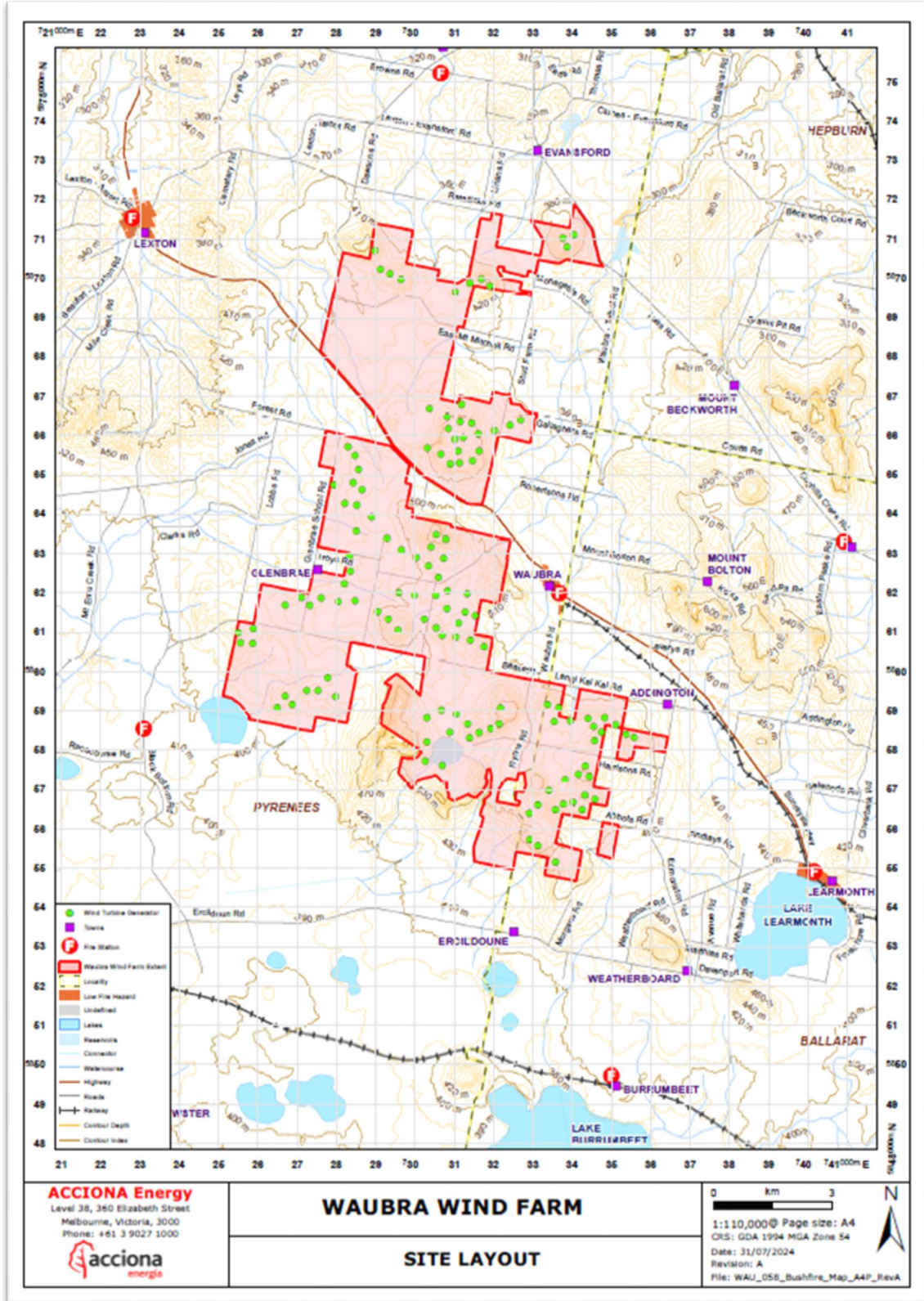
- changes in relevant legislation
- relevant incidents or event investigation findings
- audit findings or recommendations and or advice from Energy Safe Victoria or other relevant authorities
- other identified deficiencies or changes as relevant to this Plan

Scope	Name	Code	Source
All	Compliance Management Procedure	PAU01_GAE07011	Internal
All	Internal Audit Procedure	PAU01_GAE07070	Internal
All	Event Reporting and Management Procedure	PAU01_GAE07021	Internal

16. EXEMPTIONS

AEAG seeks no exemptions from ESV as part of this Plan.

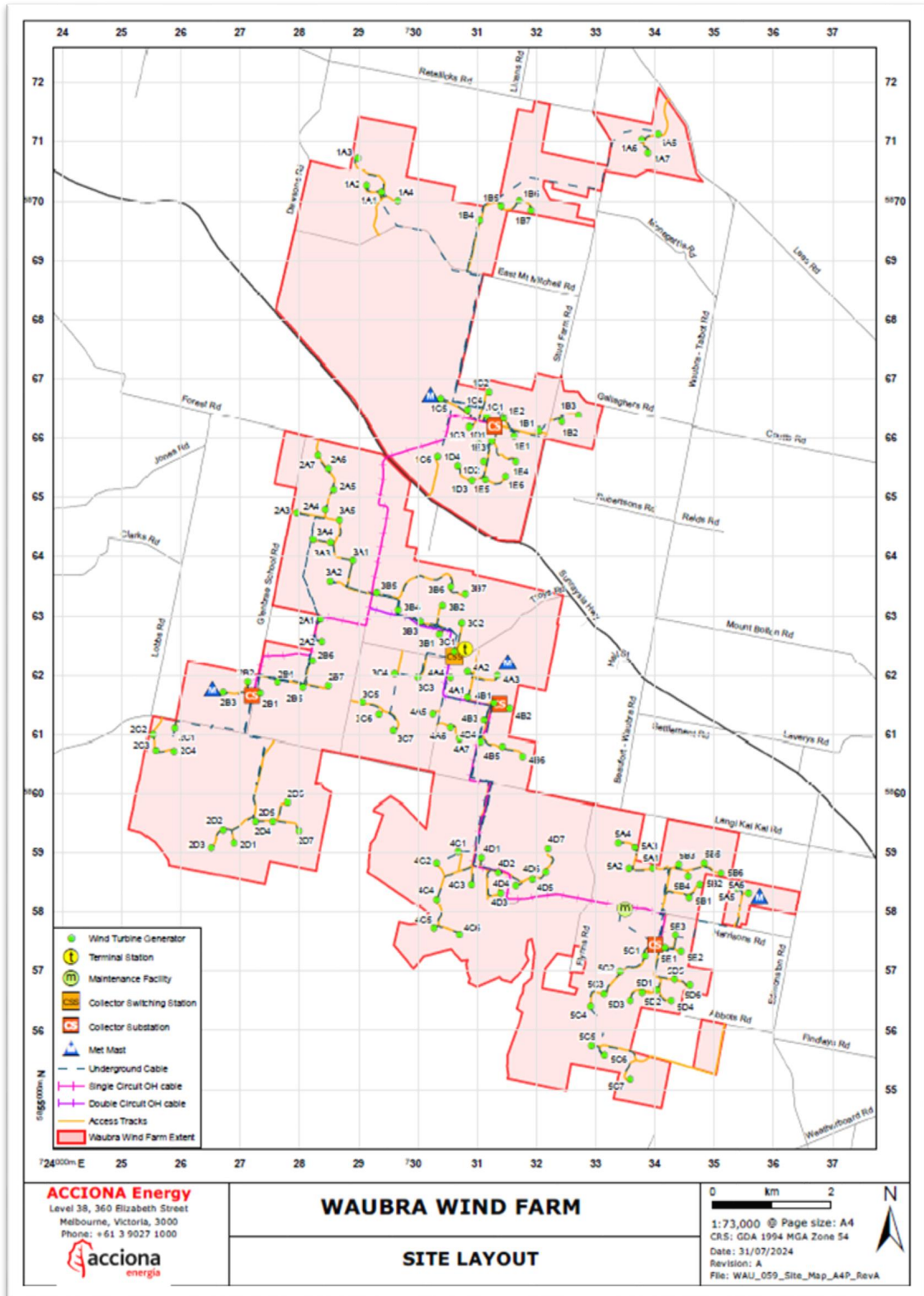
17. APPENDIX A – LOCALITY AND FACILITY MAPS



All printed or computer copies of this document not hosted in ACCIONA systems are considered NON-CONTROLLED. (Except copies explicitly stamped as CONTROLLED COPY)

PLAN

WAUBRA WIND FARM BUSHFIRE MITIGATION



All printed or computer copies of this document not hosted in ACCIONA systems are considered NON-CONTROLLED. (Except copies explicitly stamped as CONTROLLED COPY)

PLAN
WAUBRA WIND FARM BUSHFIRE MITIGATION

18. APPENDIX B – BUSHFIRE MITIGATION REGULATION CROSS REFERENCE TABLE

Reg.	Regulatory requirement	Refence
6(a)	the name, address and telephone number of the specified operator	Section 6
6(b)	the position, address, email address and telephone number of the person who was responsible for the preparation of the plan;	Section 6
6(c)	the position, address, email address and telephone number of the persons who are responsible for carrying out the plan;	Section 6
6(d)	the email address (if any) and telephone number of the specified operator's control room so that persons in the room can be contacted in an emergency that requires action by the specified operator to mitigate the danger of bushfire;	Section 6
6(e)	the bushfire mitigation policy of the specified operator to minimise the risk of fire ignition from its at-risk electric lines;	Section 8
6(f)	the objectives of the plan to achieve the mitigation of fire danger arising from the specified operator's at-risk electric lines;	Section 9
6(g)	a description, map or plan of the land to which the bushfire mitigation plan applies, identifying the location of the specified operator's at-risk electric lines;	Appendix A
6(h)	the preventative strategies and programs to be adopted by the specified operator to minimise the risk of the specified operator's at-risk electric lines starting fires;	Section 12
6(i)	a plan for inspection that ensures that all of the specified operator's at-risk electric lines are inspected at regular intervals of no longer than 37 months;	Section 12.2 & 12.3
6(j)	details of the processes and procedures for ensuring that each person who is assigned to carry out the inspections referred to in paragraph (i)—	
6(j)(i)	has satisfactorily completed a training course approved by Energy Safe Victoria; and	Section 12.5
6(j)(ii)	is competent to carry out the inspections;	Section 12
6(k)	details of the processes and procedures for ensuring that persons (other than persons referred to in paragraph (j) who carry out or will carry out functions under the plan are competent to do so;	Section 12
6(l)	the operation and maintenance plans for the specified operator's at-risk electric lines—	
6(l)(i)	in the event of a fire; and	Section 12.6

PLAN
WAUBRA WIND FARM BUSHFIRE MITIGATION

6(l)(ii)	during a total or partial fire ban day; and	Section 12.4
6(l)(iii)	during a fire danger period;	Section 12.4
6(m)	the investigations, analysis and methodology to be adopted by the specified operator for the mitigation of the risk of fire ignition from its at-risk electric lines;	Section 13
6(n)	details of the processes and procedures by which the specified operator will—	
6(n)(i)	monitor the implementation of the bushfire mitigation plan; and	Section 15
6(n)(ii)	audit the implementation of the plan; and	Section 15
6(n)(iii)	identify any deficiencies in the plan or the plan's implementation; and	Section 15
6(n)(iv)	change the plan and the plan's implementation to rectify any deficiencies identified under subparagraph (iii); and	Section 15
6(n)(v)	monitor the effectiveness of inspections carried out under the plan; and	Section 15
6(n)(vi)	audit the effectiveness of inspections carried out under the plan;	Section 15
6(o)	the policy of the specified operator in relation to the assistance to be provided to fire control authorities in the investigation of fires near the specified operator's at-risk electric lines.	Section 13
13(1)	Energy Safe may, in writing, exempt a specified operator or major electricity company from any of the requirements of these regulations	Section 16

PLAN WAUBRA WIND FARM BUSHFIRE MITIGATION

19. RELATED DOCUMENTATION

CODE	TITLE
PAU01_GAE07011	Compliance Management Procedure
PAU01_GAE07020	Internal Audit Procedure
PAU01_GAE07021	Event Reporting and Management Procedure
PAU01_GAE07006	Emergency Response Procedure
PAU02_GAE07028	Electrical Safety Management Procedure
TBA	WWF Electrical Safety Management Plan
PAU07102	Permit To Work Procedure
PAU01_GAE07022	HSE Risk Management Procedure
PAU01_GAE07023	Contractor HSEQ Requirements Management Procedure
F01_PAU01_GAE07023	Contractor Authority to Mobilise
TBA	Overhead Lines Maintenance Strategy Instruction
PLN04_PAU01_GAE07022	Operations and Maintenance HSE Plan
PLN03_PAU01_GAE07006	Emergency Response Plan Operations and Maintenance
PLNAU08104	WWF Electric Line Clearance Management Plan
PLN01_GAE07016_WWF	WWF Operational Environmental Management Plan (OEMP)
F01_PAU01_GAE07014	WWF 6 monthly Environmental Inspection Checklist
	Environmental Protection Act 2017 (VIC)
	Electricity Safety Act 1998 (VIC)
	Electricity Safety (Bushfire Mitigation) Regulations 2023 (VIC)
	Electricity Safety (Electric Line Clearance) Regulations 2020 (VIC)
	Electrical Safety (Installations) Regulation 2009 (VIC)
	Country Fire Authority Act 1958 (VIC)
	Occupational Health and Safety Act 2004 (VIC)
	www.esv.vic.gov.au – Bushfire Mitigation Plan and general energy safety information
	www.cfa.vic.gov.au – incident warning information and other fire relevant information
	www.bom.gov.au – weather information include fire danger forecasts
	www.worksafe.vic.gov.au – reportable incident information
	www.ballarat.vic.gov.au – notification of the Fire Danger Period Declaration
	www.firepermits.vic.gov.au – Fire Permits Victoria
	www.ausnetservices.com.au/About/Network-Regulation/Regulatory-Publications

NOTE: Complete the table with the documentation, legislation, regulations, etc. that is relevant to the document.